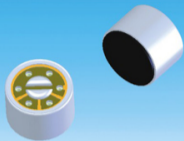


# JLI-85A-T

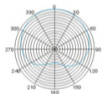
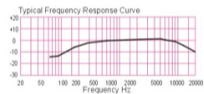
## Unidirectional Back Electret Condenser Microphone



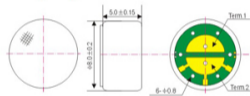
Sensitivity (1kHz, 0dB=1V/Pa)

$-42 \pm 4$  dB

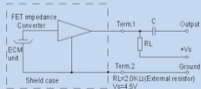
### Frequency Response



### Dimensional(mm)



### Schematic Diagram( $V_s=4.5V, R_L=2.0k \Omega$ )



### Specifications

Sensitivity:	See above
Impedance:	Less than $2.0k \Omega$
Directivity:	Unidirectional
Standard operation voltage:	4.5V
Current consumption:	Max. 0.5mA
Sensitivity reduction:	Within 3dB at 3.0V
Maximum input sound level	110dB SPL
S/N ratio:	More than 58dB