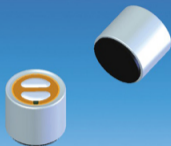


JLI-60A-T

Omnidirectional Electret Condenser Microphone

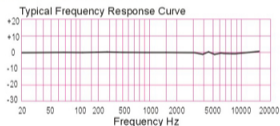


Sensitivity (1 kHz, 0dB=1V/Pa)

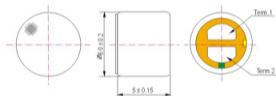
X: $-46 \pm 3\text{dB}$ Y: $-44 \pm 3\text{dB}$

Z: $-42 \pm 3\text{dB}$ W: $-40 \pm 3\text{dB}$

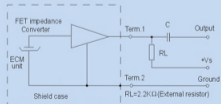
Frequency Response



Dimensional(mm)



Schematic Diagram ($V_s=2.0\text{V}, R_L=2.2\text{k}\Omega$)



Specifications

Sensitivity:	See above
Impedance:	Less than $2.2\text{k}\Omega$
Directivity:	Omnidirectional
Standard operation voltage:	2.0V
Current consumption:	Max.0.5mA
Sensitivity reduction:	Within 3dB at 1.5V
S/N ratio	More than 58dB