

JLI-2590A

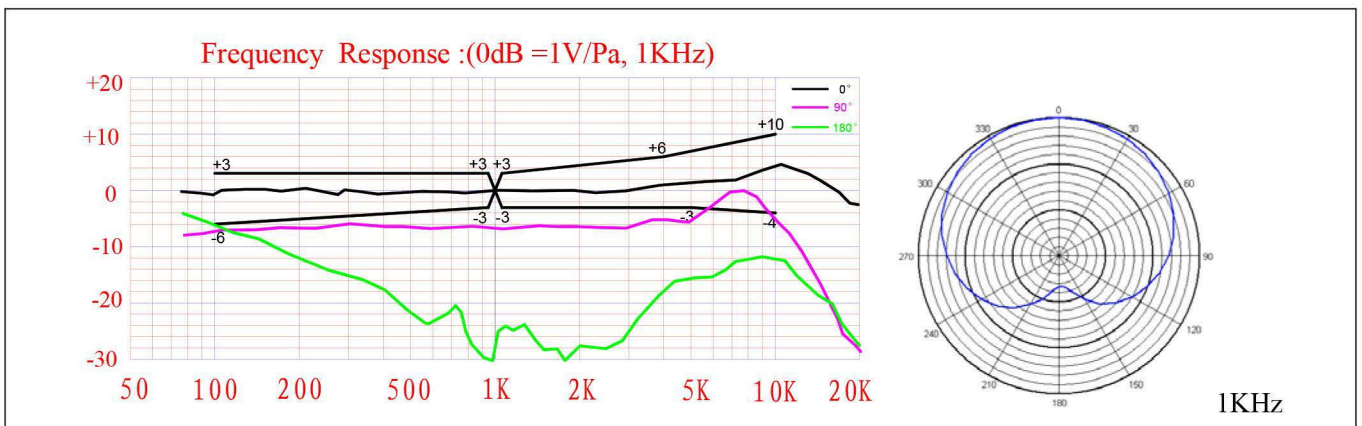
1. BACK ELECTRICAL CHARACTERISTICS

1.1 TEMP=20±2°C

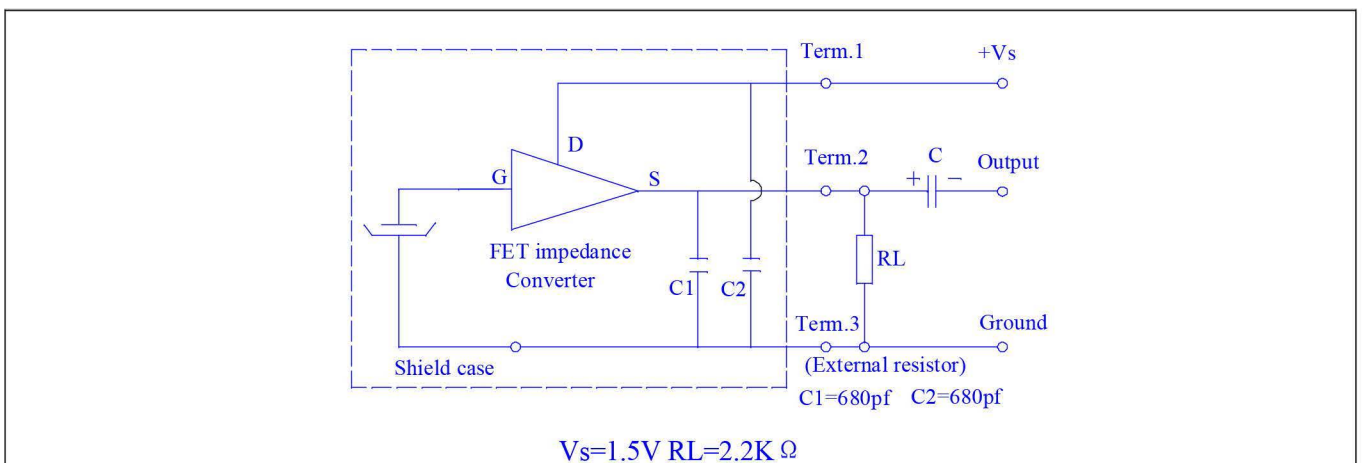
Room Humidity=65±5%

PARAMETER	SYMBOL	CONDITION	LIMITS			UNIT
			Min	Center	Max	
Sensitivity	S	F=1KHZ,S.P.L=1Pa 0dB=1V/Pa	-47	-44	-41	dB
Output impedance	Zout	F=1KHZ			2.2	K Ω
Current Consumption	IDss	VS=1.5V RL=2.2K Ω			500	μ A
Directivity	Unidirectional					
Signal to Noise Ratio	S/N	S:(F=1KHz,S.P.L=1Pa) N:(A-Weighted curve)	70			dB
Decreasing Voltage	Δ S-VS	VS=1.5V to 1.0V			-3	dB
Sensitivity Δ 0° ~180°		F=1KHz,S.P.L=1Pa	15			dB
Operating voltage			1.0		10	V
Maximum input S.P.L					130	dB

1.2 TYPICAL FREQUENCY RESPONSE CURVE

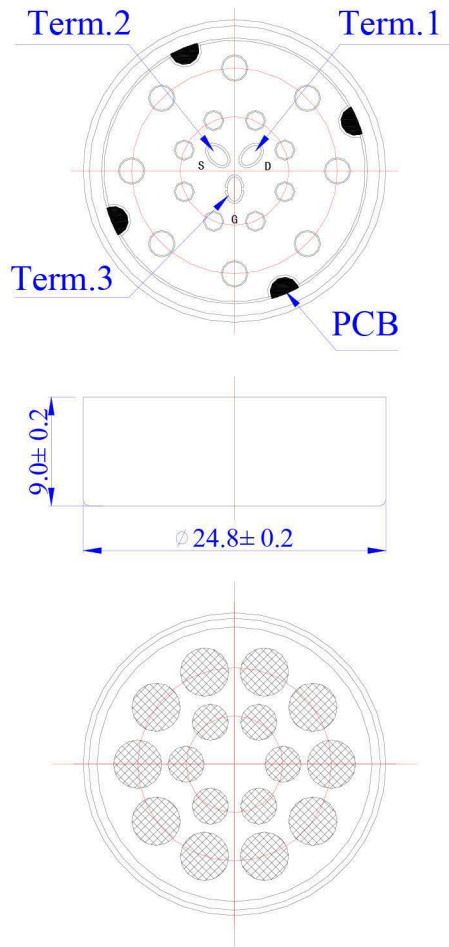


2. MEASUREMENT CIRCUIT



3. APPEARANCE & DIMENSIONS

Unit: mm



DIMENSIONS: $\phi 25 \times 9.0\text{mm}$

REMARK:

- 1.To ensure leadership of the products, our company will upgrade components layout and color adjustments. After Technology update, we won't notice again, if you have any questions, please contact our marketing department.
2. Color difference is a result of different purchase batches, which will not affect function, so it is not considered as acceptance criteria.
3. The percentage of assigned Sensitivity entering Adjacent range is less than 30%.