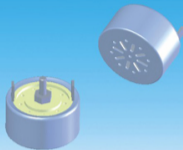


# JLI-1460A-T

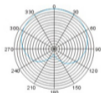
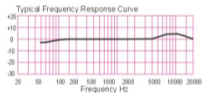
## Unidirectional Back Electret Condenser Microphone



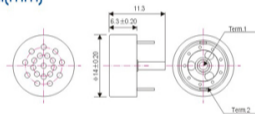
Sensitivity (1 kHz, 0dB=1V/Pa)

$-50 \pm 4\text{dB}$

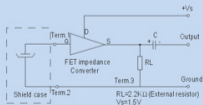
### Frequency Response



### Dimensional(mm)



### Schematic Diagram( $V_s=1.5\text{V}, R_L=2.2\text{K}\Omega$ )



### Specifications

Sensitivity:	See above
Impedance:	Less than 2.2K $\Omega$
Directivity:	Unidirectional
Standard operation voltage:	1.5V
Current consumption:	Max. 0.5mA
Maximum input sound level	120dB SPL
S/N ratio:	More than 66dB